

INTERNATIONAL TROPICAL TIMBER ORGANIZATION

ITTO

PRE-PROJECT DOCUMENT

TITLE	ESTABLISHMENT OF FOREST RESEARCH BASE FOR SUSTAINABLE FOREST MANAGEMENT IN CAMBODIA
SERIAL NUMBER	PPD 10/98 Rev.1 (F)
COMMITTEE	REFORESTATION AND FOREST MANAGEMENT
SUBMITTED BY	ROYAL GOVERNMENT OF CAMBODIA
ORIGINAL LANGUAGE	ENGLISH

SPECIFIC OBJECTIVES

The Royal Government of Cambodia, MAFF recently, decided to create a Forestry Research Institution within the Department of Forestry and Wildlife in order to support long term Sustainable Forest Management. The objective of this Pre-Project is to establish a Forestry Research base with full capacity that can serve as an instrument for upgrading technologies for sustainable Forest Management in Cambodia with a view to Forest Conservation as well as to wood sustainable use. The Pre-Project will analyse the capacity needs of Forest Management and Forestry research in Cambodia, design study the establishment of Forest Research base and Develop a Project Proposal for Submitting to ITTO.

EXECUTING AGENCY DEPARTMENT OF FORESTRY AND WILDLIFE

COOPERATING GOVERNMENTS ---

DURATION 5 MONTHS

APPROXIMATE STARTING DATE TO BE DETERMINED (UPON APPROVAL)

BUDGET AND PROPOSED SOURCES OF FINANCE	Source	Contribution in US\$	Local Currency Equivalent
	ITTO	66,971	
	Gov't of Cambodia	11,180	
	TOTAL	78,151	

PART I: CONTEXT	2
A. RELEVANCE TO ITTO	2
1. COMPLIANCE WITH ITTO OBJECTIVES:	2
2. COMPLIANCE WITH ITTO CRITERIA:	2
3. RELATIONSHIP TO ITTO ACTION PLAN AND PRIORITIES	2
B. RELEVANCE TO NATIONAL POLICIES	3
1. RELATIONSHIP TO SECTORAL POLICIES AFFECTING TROPICAL TIMBER	3
2. RELATIONSHIP TO SUBSECTORAL AIMS AND PROGRAMME	3
3. INSTITUTIONAL AND LEGAL FRAMEWORK	3
 PART II- THE PRE-PROJECT	 4
1. ORIGIN	4
2. PROJECT OBJECTIVE	4
2.1. DEVELOPMENT OBJECTIVE:	4
2.2. SPECIFIC OBJECTIVES:	4
3. PRE-PROJECT JUSTIFICATION	4
3.1. PROBLEMS TO BE ADDRESSED	4
3.2. CHARACTERISTIC OF THE PRE-PROJECT AREA	5
3.3. OTHER RELEVANT ASPECTS OF “PRE-PROJECT SITUATION”	5
3.4. INTENDED SITUATION AFTER PRE-PROJECT COMPLETION	5
3.5. TARGET BENEFICIARIES	6
3.6. PRE-PROJECT STRATEGY	6
3.6.1. REASONS FOR SELECTION:	6
3.6.2. LESSONS DRAWN FROM LAST EVALUATION:	6
3.6.3. TECHNICAL AND SCIENTIFIC ASPECTS	6
3.6.4. ECONOMIC ASPECTS	7
3.6.5 ENVIRONMENTAL ASPECTS	7
3.6.6. SOCIAL ASPECTS	7
3.6.7. MANAGERIAL ASPECTS	7
3.7. REASONS FOR ITTO SUPPORT	7
3.7.1. ITTO ASPECTS :	7

3.7.2. RELATIONSHIP TO RELEVANT ACTIONS SUPPORTED BY OTHER DONORS:	7
3.8. RISKS :	7
4. OUTPUTS	8
4.1. OUTPUTS 1	8
4.2. OUTPUT 2	8
5. ACTIVITIES AND INPUTS	8
6. LOGICAL FRAMEWORK WORKSHEETS (SEE ANNEX)	9
7. WORK PLAN (SEE ANNEX)	9
8. INSTITUTIONAL ARRANGEMENT FOR EXECUTION AND OPERATION	9
8.1. MANAGEMENT STRUCTURE	9
8.2. FUTURE OPERATION AND MAINTENANCE	9
8.3. KEY STAFF	9
9. PRIOR OBLIGATIONS AND PRE-REQUISITES:	9
10. POSSIBLE FUTURE ACTIONS	9
PART III- MONITORING, RELATING AND EVALUATION	10
3.1. ARRANGEMENT FOR REPORTING	10
3.2. ARRANGEMENT FOR ITTO MONITORING AND REVIEW	10
3.3. EVALUATION	10
PART IV-PROJECT BUDGET	10
ANNEXES	10
ANNEX 1. LOGICAL FRAMEWORK MATRIX	11
ANNEX 2: WORK PLAN	13
ANNEX 3- TOTAL PRE-PROJECT BUDGET BY ACTIVITY	14
ANNEX 4: PRE-PROJECT BUDGET BY SOURCE OF FINANCE	15
ANNEX 5- PRE-PROJECT ORGANIZATION CHART	16
ANNEX 6: TERM OF REFERENCE	17
ANNEX 7- UNIT PRICE OF PROJECT BUDGET	18

PART I: CONTEXT

A. Relevance to ITTO

1. Compliance with ITTO Objectives:

This Pre-Project proposal is consistent with the ITTO objectives, as indicated in the International Tropical Timber Agreement, 1994. It conforms specially to the following sections of Article 1:

- f) To promote and support research and development with a view to improving forest management and capacity to conserve and enhance other values in timber producing of tropical forests.
- d) To enhance the capacity of members to implement a strategy for achieving exports of Tropical timber and Timber products from sustainably managed sources by the year 2000.
- g) To develop and contribute towards mechanisms for the provision of new and additional financial resources and expertise needed to enhance the capacity of producing members to attain the objectives of this agreement.
- m) To promote the access and transfer of technologies and technical cooperation, to implement the objective of this agreement.

2. Compliance with ITTO criteria:

This Pre-Project proposal is related to the five areas of ITTO criteria, especially the Institutional framework, Forest National Planning and training of technical personnel. As Cambodian Forestry sector has not yet the existing research institution, these above areas should support to the Forest research base of the country for the sustainable Forest management as well as related to the Development of wood use and tropical timber trade, reforestation and forest management.

3. Relationship to ITTO Action Plan and Priorities

This Pre-Project activities are compatible and consistent with ITTO Action plan and Priorities. It will support a member country in capacity building and developing a research base for taking Forestry National actions towards the adoption of sustainable management. The implementation of This Pre-Project will ensure that existing skills are used, and particularly, it will avoid duplication of efforts. It conforms to the strategies in Reforestation and Forest Management areas as follows:

- f). Assist in creating a scientific basis for Sound Forest Management.
- g). Develop and Promote the intellectual, economic and technological basis for Integrated Forest Management systems and optimal use of the Tropical forests, taking in consideration multiple benefits that can be derived from them.
- h). Promote and assist in the development of adequate skills for research and for implementation of Forest Management operation.

B. Relevance to National Policies

1. Relationship to sectoral policies affecting Tropical timber

The Declaration N° 03 PK dated 28 April 1995 of Cambodian Royal Government has adopted a clear Forest Policy for Sustainable Management and Conservation. The main objectives of the Policy concerning with This Pre-Project are:

- Pursue the principle guidelines of the ITTO in Promoting Sustainable Forest Management.
- Reinforcing to put in process the Forest research bases in order to reestablish the Forestry infrastructure and researched mechanism various experimental activities.

Pursue the Policy of Government, the Ministry of Agriculture, Forestry and Fisheries has been recently adopting a declaration on the Establishment of Institute of Forest Research and Education & wildlife as a Forest Data Base to support the Forestry Department in developing and carry out the sustainable Forest Management.

2. Relationship to subsectoral aims and Programme

The Pre-Project conforms to the strategies of Ministry of Agriculture, Forestry and Fisheries (MAFF) for the rehabilitation of Forest research base and the capacity building for the sustainable management of Forest resources, the most important are as follows:

- To develop technology by creating a Forest research base that could be operated in full capacity for all subjects in Sustainable Forest Management, Natural Forest resources assessment & Monitoring, development of technology in Forest Plantation, wood technology etc...
- To develop the human resources by Training the Forest Scientists short or long term education, in order to support and promote with full capacity the Forest research activities and develop technology for sustainable Forest Management.

3. Institutional and Legal Framework

The Pre-Project will be implemented by Department of Forestry and Wildlife in according with the decision of MAFF to establish the Forest Research and Management Institute External Consultants with large experience in forest research and Forest Management will be involved in the actual Implementation of the Pre-Project.

PART II- THE PRE-PROJECT

1. Origin

This Pre-Project has been prepared following the recommendation and conclusion the report of the National Seminar on **Priorities and Institutional Arrangements for Forestry Research in Cambodia**, held in Phnom Penh, 7Th May 1997. This report states that there is a need strengthen the access to the field research through training from short term steps and simultaneously, to develop a long term framework to create a stronger national research base.

2. Project Objective

2.1. Development Objective:

To develop technologies for Sustainable Forest Management, through strengthening the human resources available to promote the research activities that could provide Forest Data base information for National Forestry Sector Master Planning and adoption the strategies and Programme for the achievement of Sustainability of National Forest resources.

2.2. Specific Objectives:

To establish a Forest research base with full capacity that can serve as an instrument for upgrading technologies in Sustainable Forest Management with a view to Forest Conservation as well as to Forest Sustainable use *and building up the capacity needs of forest research and management in Cambodia.*

3. Pre-Project justification

3.1. Problems to be addressed

Forest resources Management trends in Cambodia has been initiated. The Forest Policy and Legislation relating to the control and Management of Forest resources has been initiated to facilitate systematic management. Logging Practices require substantial improvements, and sustainability of timber production from the forests depends on increased efforts to generate/ rehabilitate logged over and degraded areas. The ongoing effort on reforestation, Watersheds Management and Conservation of Wildlife resources required to improve skillful and supported by enhanced capacity to develop appropriate practices.

However, the present approach to Forest resources use need significant for improvement and efforts to strengthen the scientific base of Forest Management should be established considerably. As such the Forest research and technology capability of Cambodia is far from satisfactory and the ability to analyse the environmental, economic and social implication of various resources management option is very limited.

The Forest research institution that existed earlier (before 1975) was completely destroyed during the civil war. In the situation of human and material resource constraints and the absence of suitable institutional framework for Forest research, it is important to be initiated through this Pre-Project.

3.2. Characteristic of the Pre-Project Area

Cambodia occupied 181.035 S.q.Km of total areas, approximately 11.3 million ha or 62 % of which are covered by forests. According to the Forest areas in 1970; 2 million ha of forests or about 10% of its have been reduced during the last 2 decades of civil war in the country. It was estimated that 7 million ha of forest areas have been approved for harvesting investment companies and about 3.5 million ha or 18 % of the Forest areas are under the management as Protected areas.

Department of Forestry and Wildlife is a National Institution responsible in Management, Protection, Conservation and Development of the Forest resources of the country. After the resolution of Political conflict in the country, the Forestry sector faces a period of reconstruction and development. A major National asset the forest resources will play an important focus for providing the priorities of economy potential rehabilitation. The most constraints being actually as a heavy threat to Cambodian Forestry sector is illegal logging activities and less capacity and capacity in controlling the forest harvesting operated by concession company owners, so that it can be unsustainable of the resources base.

The Department of Forestry and Wildlife (DFW) needs immediately to build up capacity both for human resources and upgrading technologies for routine implementation, associated with ongoing management activities. In order to save, rehabilitate and develop the Forestry sector, challenging with the above constraints and to focus the sustainable management of the resources, DFW should be a permanent base of Forest Management technical information and research data.

The establishment of the Forest Research Institute as the focal area of the development of the sustainable Forest Management in Cambodia should be recreated immediately.

3.3. Other relevant aspects of “Pre-Project situation”

The general relevant aspects of this pre-project need to build up capacity of Department of Forestry and Wildlife and establish the forest research base. Anyway, other relevant aspects should be detailed consider such as to strengthen the human resources on possible working with research focal area, enhancing the forest resources sustainable management, upgrading technology in forest resources assessment by using Remote Sensing, Mapping, GIS, Biodiversity assessment, Inventory and Monitoring forest eco-system, using biotechnology in Forest sustainable management by integrated the existing silvicultural concepts, upgrading wood technology by research the potentiality of less known species uses and so on.

The establishment of forest research base will provide information data base and technical guidelines to support the implementation of DFW for sustainable forest management.

3.4. Intended Situation after Pre-Project Completion

On pre-project completion, a project proposal will have been elaborated for submission to ITTO, the required background information on general aspects such as capacity building of the FDW in forest research base establishment and upgrading technology in sustainable forest management will be identified and presented. Other relevant aspects to be considered such as human resources capacity building, means and materials supported to the forest research activities and the forest research action plan will have been clarified and will be presented in details.

3.5. Target Beneficiaries

The main beneficiaries of the Pre-Project will be the Department of Forestry and Wildlife. A detail and comprehensive project proposal will submit to ITTO for evaluation and approval. While the project will put in implementation, the forest management in Cambodia should be improved, so that the last beneficiaries will be the Government of Cambodia and the local community depending on forest resources.

3.6. Pre-Project Strategy

36.1. Reasons for selection:

The Proposed Pre-Project is designed to build up capacity of forestry institution, to strengthen the human resources and to update technologies in forest management, forest inventory and monitoring, Reforestation and Biotechnology, Biodiversity assessment and conservation, wood technology and forest Industrial, and to support a Forest research base in Cambodia Forestry sector as a permanent scientific database for Sustainable Forest Resources Management. This Pre-Project will ensure that most of the relevant factors are taken into consideration in designing the Project to establish a Forest Research Institution.

36.2. Lessons drawn from last evaluation:

Before 1970, Cambodian Forestry has been effectively managed with sustainable way. The Forestry Institute in that time, was a scientific data base for the implementation of Forestry action plan and all technical activities in Forest Management.

During more than 2 decades of civil war, this forestry research Institute was destroyed. In spite of the fact that the actual Forestry Department has less capacity in implementing its activities for Sustainable Forest Management because we have no Forest Research Institute to provide scientific information data base.

The national seminar supported by Forestry Research support programme for Asia Pacific (FORSPA) has been discussed about the priorities and Institutional Arrangements for Forestry Research in Cambodia. The seminar has been recommended to strengthen capacity of Forestry Department to undertake research linked activities, the first step needs to support for strengthening access to information, special training, and some of the short term steps. Simultaneously, it is crucial to develop a long term frame work to created a stronger national research base with qualified and competent researchers while the overall research capability is to be improved.

36.3. Technical and Scientific Aspects

The main technical and scientific aspects in relation to this Pre-Project are to develop technologies in implementation of sustainable Forest Management. The end of this Pre-Project will be establish the project proposal under developing the Forest Research base of Cambodia which include the capacity building in research network and upgrade technologies for main activities in Forest Management.

36.4. Economic Aspects

The improvement of sustainable Forest Management through upgrading technology and building up capacity in Forest Research will be important to ensure sustainable use of the resources and to improve the national economy from Forest product. So this pre-project will be particularly important when considering its economic implications in the implementation of sustainable Forest Management in Cambodia.

36.5 Environmental Aspects

The implementation of this Pre-Project doesn't represent risks to the environment. Actually, it will support to the establishment of a project that can strengthening capacity building and upgrading technology in the Forest Research for its sustainable use and conservation.

366. Social Aspects

This Pre-Project will support to Forest Research base of the Cambodia through building capacity and upgrading technology. This involved the enhancement of sustainable Forest Management that is related to the social aspect of local communities in sustainable use of the natural resources.

367. Managerial Aspects

The Pre Project will managed by Department of Forestry and Wildlife (DFW).

The actual implementation of the activities will be done by consultant which term of reference is attached.

3.7. Reasons for ITTO Support

3.7.1. ITTO Aspects :

The submission of this Pre-Project proposal to ITTO refereed directly to the objectives of the Agreement ITTA 94, to help research and development which will improve sustainable Management and wood use.

3.7.2. Relationship to relevant actions supported by other donors:

There is an Organisation supported to the initiation of Forest research activities. It is Forestry Research Support Programme for Asia and the Pacific (FORSPA). This organization has organized a national seminar to study keys issue and determined priorities and Institutional arrangement for Forestry Research in Cambodia.

3.8. Risks :

No risks were identified for the implementation of this Pre-Project.

4. Outputs

4.1. Outputs 1

Available information on capacity building of human resources, upgrading technologies, and other relevant aspects needed for supporting the forestry research in Cambodia are collected and analyzed.

4.2. Output 2

A project proposal for the establishment of forest research base in Cambodia.

5. Activities and Inputs

5.1. Output 1 : Available information on capacity building of human resources, upgrading technology and other relevant aspects needed for supporting the Forest Research in Cambodia are collected and analyzed.

<u>Activities</u>	<u>Inputs</u>
<u>A 1.1</u> - Analyze the current capacity in Forest Management and Forestry Research capacity of Cambodia.	- 01 Pre-Project Coordinator 2 m/m - 01 International Expert 1.5 m/m - Air-ticket for I/E - 02 Field travels
<u>A.1.2</u> - Organize one workshop to analyze by consultation on the capacity need in forestry research (01 day).	- 30 Participants. - Workshop tools and Place supply. - 01 Resource person (I/E).

5.2. Output 2: A project Proposal for the establishment of Forest Research base in Cambodia.

<u>Activities</u>	<u>Inputs</u>
<u>A 2.1</u> - Survey and design the construction of Forestry Research base and equipment requirement.	- 01 Project Coordinator 3 m/m - 01 International Expert 1.5 m/m
<u>A.2.2</u> - Organize one workshop to present the draft study of Forest Research base establishment (01 day).	- 30 Participants. - Workshop tools and place supply. - 01 Resource person (I/E).
<u>A. 2.3</u> - To develop a Project Proposal for the establishment of Forest Research base in Cambodia for the submission to ITTO.	- 01 International Expert 2 m/m - Publication of final documents.

6. Logical Framework Worksheets (See Annex)

7. Work Plan (See Annex)

8. Institutional arrangement for execution and operation

8.1. Management structure

Department of Forestry and Wildlife (DFW) will be responsible for the implementation of this Pre-Project. One National Pre-Project coordinator should be organized with some national staff to be worked in the Pre-Project unit.

8.2. Future operation and maintenance

This Pre-Project Proposal will be developed a Project Proposal on the establishment of Forestry Research Base in Cambodia that will point out the capacity building of forestry research, upgrading technologies, human resources strengthening to assist the National Forestry Action Plan for sustainable management of the resources in the future.

8.3. Key staff

To ensure the responsibility, this Pre-Project will be generally headed by Director General of the Department of Forestry and Wildlife, and will be directly managed and responsible by **One National Project Coordinator**, for the overall activities. He will be assisted by one **International expert** on Forest Research base establishment. Some more national staff will be assigned to be use in the Pre-Project as the counterparts if needed.

9. Prior obligations and Pre-requisites:

Department of Forestry and Wildlife (DFW) will take care of all Prior obligation and prerequisites to facilitate the supplementation of this Pre-Project, including staff assignment, budgetary conditions, provision of information available, field study and survey for forest research base design.

10. Possible Future Actions

The Future actions are related to the establishment of Forest Research base should be prescribed in the Pre-Project. The main activity is the support to the proceeding of the Forest Research activities every year after a Forest research bade has been established. These activities will be the responsibility of Department of Forestry and Wildlife (DFW) and supported by National Budget or International support.

PART III- Monitoring, Relating and Evaluation

3.1. Arrangement for Reporting

Two monthly progress reports and a final report will be submitted by the Pre-Project coordinator to ITTO.

3.2. Arrangement for ITTO Monitoring and review

ITTO shall monitor this Pre-Project in accordance with its rules and regulations. DFW will also monitor the Implementation on behalf of Cambodian Government.

3.3. Evaluation

Evaluation will be carried out in accordance with ITTO rules and regulation.

PART IV-Project Budget

(See Annex)

ANNEXES

- 1- Logical Framework Matrix.
- 2- Work Plan
- 3- Pre-Project Budget by Activities
- 4- Pre-Project Budget by Source of Finance.
- 5- Pre-Project Organization chart.
- 6- Terms of reference of International expert.
- 7- Unit Price of Project Budget

Annex 1. Logical Framework Matrix

Project Elements	Objectively verifiable indicators	Means of Verification	Important assumptions
<p><u>Development Objective:</u> To develop technologies for sustainable forest Management through strengthening the human resources available to promote the research activities that could provide Forest Master planning and adoption the strategies and Programme for the achievement of sustainability of National Forest Resources.</p>	<p>A forestry Research base should be created to support future development of Technology for sustainable Forest Management.</p>	<p>Project Proposal developed and submitted for financing.</p>	<p>Forest Resources need be used in sustainable way.</p>
<p><u>Pacific Objective:</u> To establish a Forest Resources base with full capacity that can serve as instrument for upgrading technologies in sustainable Forest Management in Cambodia with a view to Forest Conservation as well as to Forest sustainable use.</p>	<p>Develop Project Proposal</p>	<p>Analyze the capacity need on Forestry Research design and plan the establishment of Forestry Research base.</p>	<p>Sustainable Forest Management should be ensured.</p>
<p><u>Output :</u> Available information on capacity building of human reseuces, upgrading Technologies, Establishment of Forest research base and other relevant aspects needed for supporting the Forest Research in Cambodia .</p>	<p>Relevant information collected and analyse</p>	<p>List of Document, contract made, discussion consultation and report.</p>	<p>Recruitment of consultant</p>

<u>Activity 1.1</u> : Analyse the current capacity in forest Management and Forest Research of Cambodia.	Relevant information collected and programs report.		Timely compilation of documents
<u>Activity 1.2</u> : Organize one workshop to analyze by consultation on the capacity needs in Forestry Research.	Discussion and relevant Recommendations collected and report.		Availability of Inputs assured.
<u>Output 2</u> : A Project Proposal for the establishment of Forest Research base in Cambodia.	Plan developed for all priorities need in Forest research establishment and proceeding.	Adequate, Survey, Design planning and elaborating Draft documents.	Site for Forest Research base construction.
<u>Activity 2.1</u> Survey and Design the construction of Forest Research base and equipment requirements.	Survey and adequate site and construction data by identifying the site for appropriate design of Forest Research base construction and planning the appropriate need in equipment for proceeding construction and Research works		availability of inputs assured.
<u>Activity 2.2</u> Organize one workshop to present draft study of Forest Research base establishment.	Discussion and Relevant Recommendations collected and revise.		Consultation held at all Relevant levels.
<u>Activity 2.3</u> To develop a project proposal for the establishment of Forest Research base in Cambodia for the submission to ITTO.	Draft project proposal elaborated, revised and Prepare to be submitted for financing.		Availability of Inputs assured.

Annex 2: Work Plan

<u>Outputs and Activities</u>	<u>Responsible Party</u>	<u>Schedule (in months)</u>				
		1	2	3	4	5
<u>Output 1:</u> Available information on capacity building of human resources, upgrading technologies and other relevant aspects for supporting the Forest Research in Cambodia are collected and analysed.						
<u>Activity 1.1</u> Analyse the current capacity in Forest Management and Forestry Research of Cambodia.	IE/PC					
<u>Activity 1.2</u> Organize one workshop to analyse by consultation on the capacity needs in Forest Research.	IE/PC					
<u>Output 2:</u> A Project Proposal for the establishment of Forest Research Base in Cambodia.						
<u>Activity 2.1</u> Survey and Design the consultation of Forest Research Base and Equipment requirements.	IE/PC					
<u>Activity 2.2</u> Organize a workshop to present the draft study of Forest Research base establishment.	IE/PC					
<u>Activity 2.3</u> To develop a Project proposal for the establishment of Forest Research base in Cambodia for the submission to ITTO.	IE					

Notes: IE - International expert
PC - Pre Project Coordinator

Annex 3- Total Pre-Project Budget by Activity

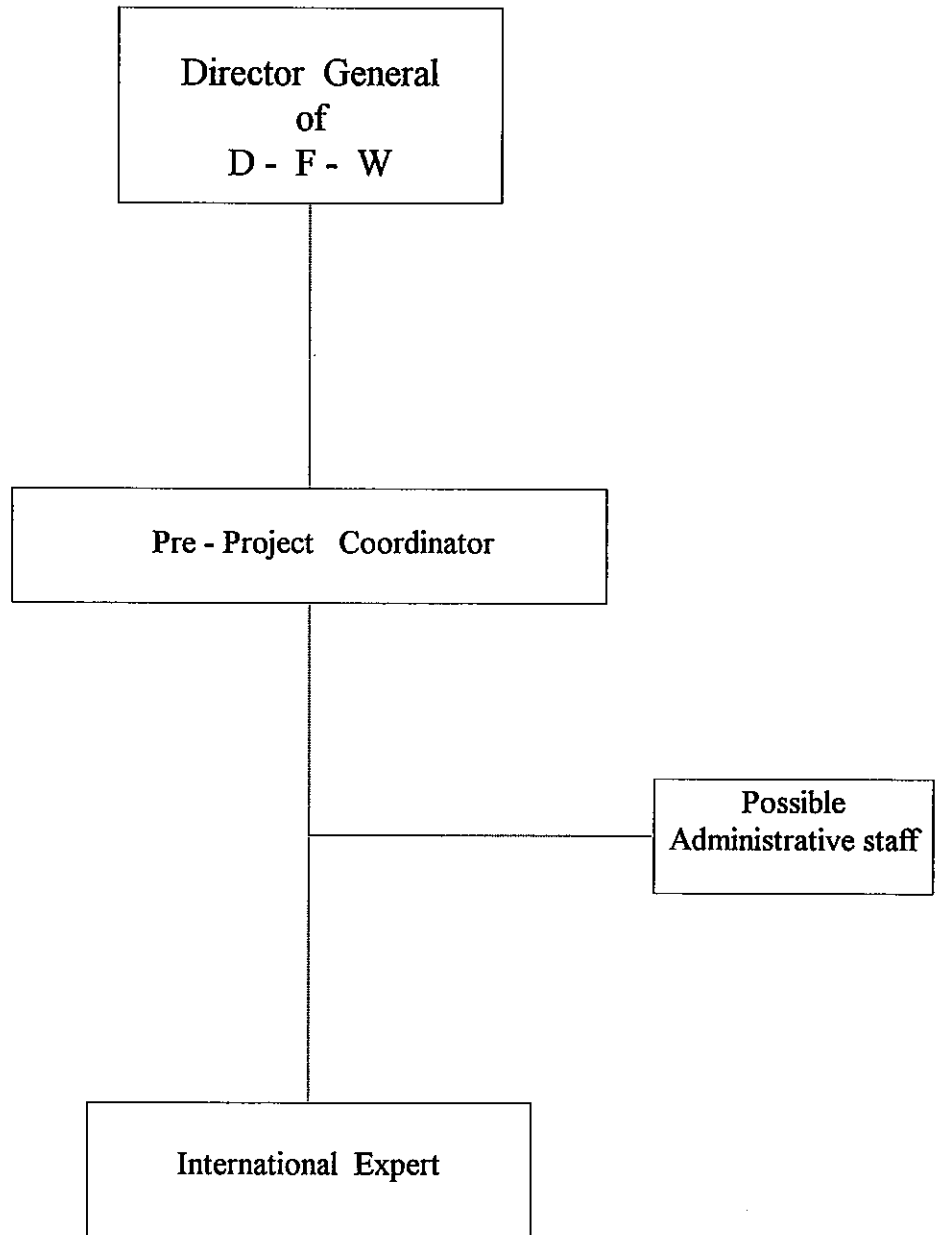
<u>Outputs / Activities</u>	Budget Components							
	Project Personnel	Sub-Contracts	Duty travel	Capital items	Consumable items	Miscellaneous	ITTO monitoring & evaluation	Grand Total
<u>Output 1:</u> Available information on capacity building of human resources upgrading Technologies and other relevant aspects needed for supporting the Forest Research in Cambodia are collected and analysed.							-	
<u>Activity 1.1 :</u> Analyse the capacity in Forest Management and Forestry Research in Cambodia.	16,600	-	2,360	-		-	-	18,960
<u>Activity 1.2 :</u> Organize one workshop to analyze by consultation on the capacity needs in Forestry Research.	-	-	-	-	7,000	2,000	-	9,000
<u>Output 2:</u> A project proposal for the establishment of Forest Research base in Cambodia .								
<u>Activity 2.1:</u> Survey and Design the construction of Forest Research base and equipment requirements.	17,400	-	-	-	-	1,000	-	18,400
<u>Activity 2.2 :</u> Organize a workshop to present the draft study of Forest Research base establishment.	-	-	-	-	-	2,000	-	2,000
<u>Activity 2.3 :</u> To develop a project proposal for the establishment of Forest Research base in Cambodia for the submission to ITTO.	20,000	1,000	-	-	-	-	9,090	30,000
<u>Grand Total .</u>	54,000	10,000	2,360	-	7,000	5,000	9,090	78,450

Annex 4. Pre-Project Budget by Source of Finance

(In US Dollars)

Category	Government of Cambodia	<u>ITTO</u>	Total
<u>1.0. Pre-Project Personal</u>			
1.1 Pre-Project coordinator.	4,000	-	4,000
1.2 International expert.	-	50,000	50,000
1.9 Component Total:	<u>4,000</u>	<u>50,000</u>	<u>54,000</u>
<u>2.0 Sub-contract</u>			
2.1. Publication	-	1,000	1,000
2.9. Component Total:	-	<u>1,000</u>	<u>1,000</u>
<u>3.0. Duty Travel</u>			
3.1. DSA	180	180	360
3.2 Transport Cost	-	2,000	2,000
3.9. Component Total	<u>180</u>	<u>2,180</u>	<u>2,360</u>
<u>5.0 Consumable Item</u>			
5.1. Office supply and Workshop	7,000	-	7,000
5.9. Component Total:	<u>7,000</u>	-	<u>7,000</u>
<u>6.0 Miscelenous</u>			
6.1. Workshop	-	4,000	4,000
6.2. Contingency	-	1,000	1,000
6.3. Component total:	-	5,000	5,000
<u>7.0. ITTO Monitoring and Administrative Cost</u>			
7.1. ITTO Monitoring.	-	5,000	5,000
7.2. Administration and evaluation	-	4,090	4,090
7.9. Component Tatal	-	<u>9,090</u>	<u>9,090</u>
Grand Total:	<u>11,180</u>	<u>67,270</u>	<u>78,450</u>

Annex 5: Pre-Project Organization Chart



Annex 6: Terms of Reference

Establishment of Forestry Research Base to support the Sustainable Forest Management in Cambodia.

International Expert

1. Professional qualification:

- *A minimum of a masters degree in Forestry with at least 15 years working experience in the field of Forest Research planning and Management in Tropical Regions.*
- *Excellent commend of English and French language.*

2. Duration:

- Five months

3. Statement of duties:

The International Expert in close cooperation with Pre-Project Coordinator and under supervision of ITTO and Department of Forestry and Wildlife shall:

- Conduct an analysis of current capacity a Forest Management and Forest Research capacity of Cambodia.
- Conduct workshop and consultation to determine the capacity need in Forestry Research.
- Survey and Design the construction of Forest Research Base and planning the requirement in Equipments and Materials for Research activities.
- To conduct workshop discussion of the draft Project Proposal for the establishment of Forest Research Base.
- To develop a Project Proposal and ultimately responsible for the Project Proposal document.

Annex 7: UNIT PRICE OF PROJECT BUDGET

Category	Unit	US \$
- International Expert	Month	10,000.00
- National Project Coordinator	Month	800.00
- Travel	Fly	1,000.00
- DSA	Day	30.00